

teen **LIVING** programs

FACT SHEET

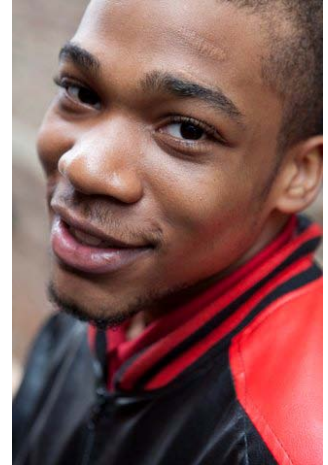
The Basics:

- Equips youth who are homeless to secure & sustain stable housing & self-sufficiency
- Programs based in historic Bronzeville, serving Chicago area since 1976
- Annually serves 500+ youth who are homeless or at risk of homelessness
- Annual operating budget of \$2.6 million
- 42 Staff, 14 credentialed at masters level or higher
- Premiere training and internship site for area's social work graduate schools



Youth Profile:

- Extremely impoverished backgrounds
- Parents do not want, or are unable, to care and provide for them
- Forced to leave home because of conflict, neglect, and abuse
- Predominantly African-Americans from South and West sides of Chicago
- 50 percent lesbian, gay, bisexual, or transgendered--a leading factor in youth homelessness
- Entrepreneurially spirited, willing to do what it takes to meet their goals



Notable Outcomes:

- Housing Stability: 2 of 3 youth secure and keep stable housing for at least six months when they leave TLP
- Education: 2 of 3 youth have completed or are attending formal education or training programs when they leave TLP
- Employment: 3 of 4 youth have gained employment by the time they leave TLP
- Independent Living Skills: 3 of 4 youth are competent to live independently by the time they leave TLP

Programs & Services:

- SCOPE: Street outreach connecting youth to housing and services
- Bronzeville Youth Shelter: Emergency housing for 4 youth, ages 14 to 17
- Belfort House: Transitional residence for 24 youth, ages 18 to 21
- CaSSA: Permanent housing apartments for 10 youth, ages 18 to 24
- I-SKIL: Competency-building in education, employment, and life skills
- Whole Health: On-site health care, culinary nutrition, counseling and therapy
- Shoulder-to-Shoulder: Ongoing support following program participation

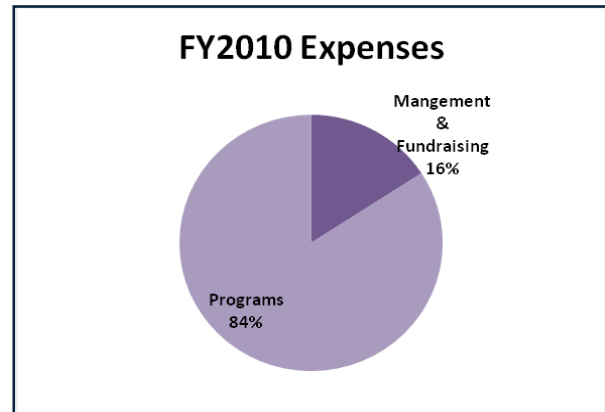
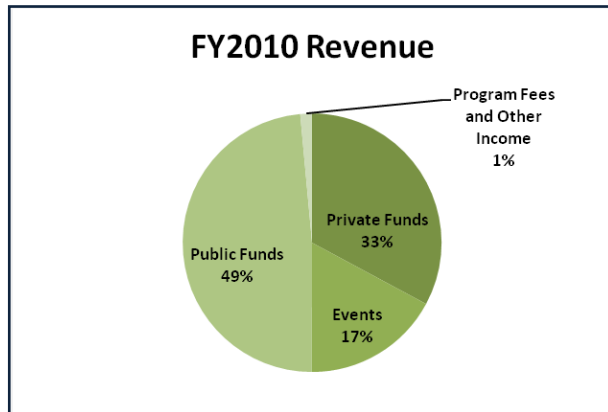


Program Philosophy and Model:



- **Philosophy:** Positive Youth Development
 - Views youth as contributors to the community not problems to be solved
 - Youth determine their own goals and road to independence
 - Staff collaborate with youth, rather than direct them, to meet goals
 - Youth gain internal drives for success rather than through external rewards
- **Model:** Residential milieu informed by the Sanctuary Model
 - Homelessness causes trauma; youth need safe, communal atmosphere to heal
 - Youth, staff, directors and volunteers see themselves as vital parts of whole
 - Individuality is prized, as are mutual respect and community participation
 - Work and chores contribute to community life, not tasks to keep clients busy
 - Process of community decision-making is open and public

FY2010 Budget: \$2,648,281



Board of Directors

Officers

Gerald Pauling II, Chair *Seyfarth Shaw*
Bruce Pedigo, Vice Chair, *Veratect*
Brenna Berman, Secretary, *IBM*
Michelle Zahler, Treasurer, *PricewaterhouseCoopers*
Virginia Mason, Interim Executive Director, *Teen Living Programs*

Directors

Billy Dexter, *Heidrick & Struggles*
Jeffrey Dorsey, *Chicago Tribune*
John Eck, *First Chicago Bank and Trust*
Cheryl A. Harris, *Accenture Procurement Solutions*
Richard Kuzmar, *Greeley and Hansen*
Paul McHugh, *McHugh Development*
Mary Lou Mulvihill Skalkos, *Mulbro Limited Partnership*
Jim Plunkard, *Hartshorne Plunkard Architecture*
Llevelyn Rhone, *A², LLC*
Dolores Thibodeaux, *All Points Security*

For more information, contact Nia Tavoularis at Teen Living Programs: 312-568-5700, ext. 228, or niat@teenliving.org
Visit us online at www.teenliving.org.